

# CONNECTING TO THE PUBLIC WIRED & WIRELESS NETWORK WITH

## NOTES:

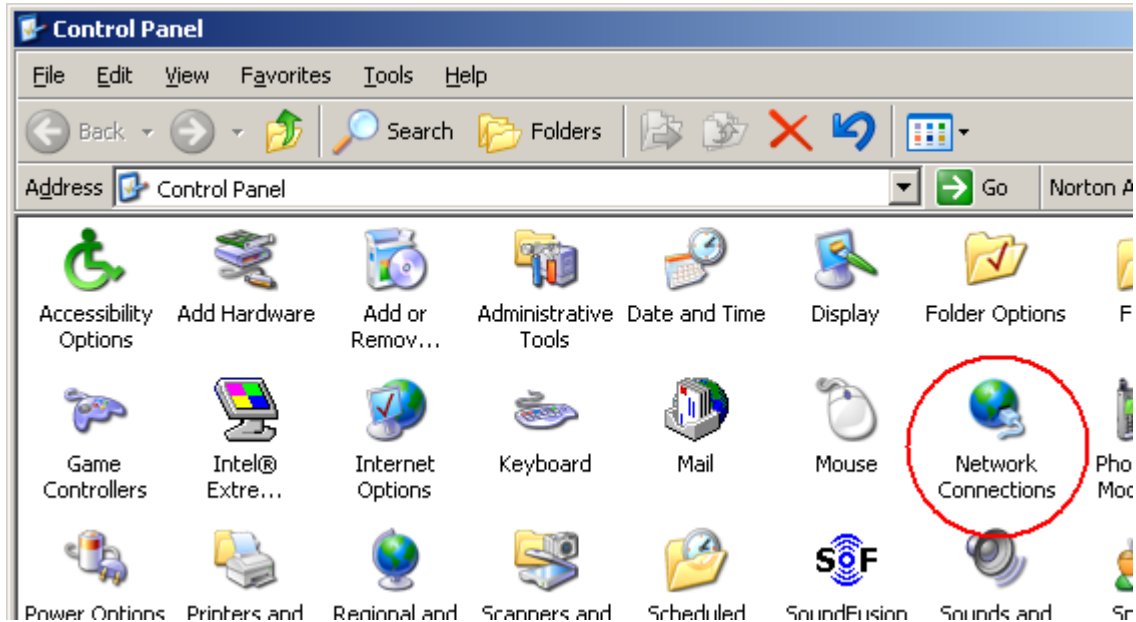
- This setup guide attempts to aid the user in connecting his or her laptop to the Library's public network. All "screen shots" included in this guide were made from an Acer TravelMate series Laptop with Windows XP Professional, Service Pack 1 installed. Your actual laptop screens may or may not match exactly what is shown in this guide.
- Patrons may have to **temporarily disable existing network connections** to other wireless and/or wired networks before connecting to the Library's public network. (i.e. AOL, Optimum Online, school, college, work, home, etc.)
- If you changed your laptop's configuration to make it work in the library, **remember to change it back** when you leave so it will work again when you are back at home, work, school, etc...
- A **basic operational knowledge** of your laptop is assumed. Reference Librarians are not "computer experts" and are not trained to configure or troubleshoot laptops for patrons.
- This procedure assumes the user **already has** either a wireless network card or Ethernet port installed, any cables or adapters needed, and the necessary network protocols installed in the laptop.

## DISCLAIMER:

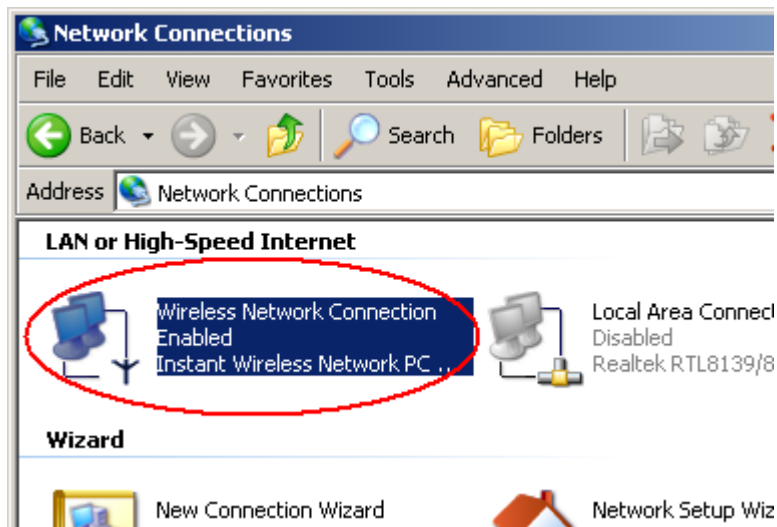
- The Library's public network is a true "Hot Spot" – **a free and open but unsecured network**. No ports are blocked, web content is not filtered, and usage statistics are not gathered by the Library on the public network. Use at your own risk!
- Utilizing virus protection, a personal firewall, and other measures to protect the information on your laptop is highly recommended, and is the sole responsibility of the laptop user.
- The Library is not responsible for any loss of information or damage to your laptop that might result from using the network in the Library.
- All information received by or sent from your laptop may be intercepted by anyone with the appropriate equipment. We recommend that users **do not use this service to send any sensitive information**, such as social security or credit card numbers.

# SETUP GUIDE

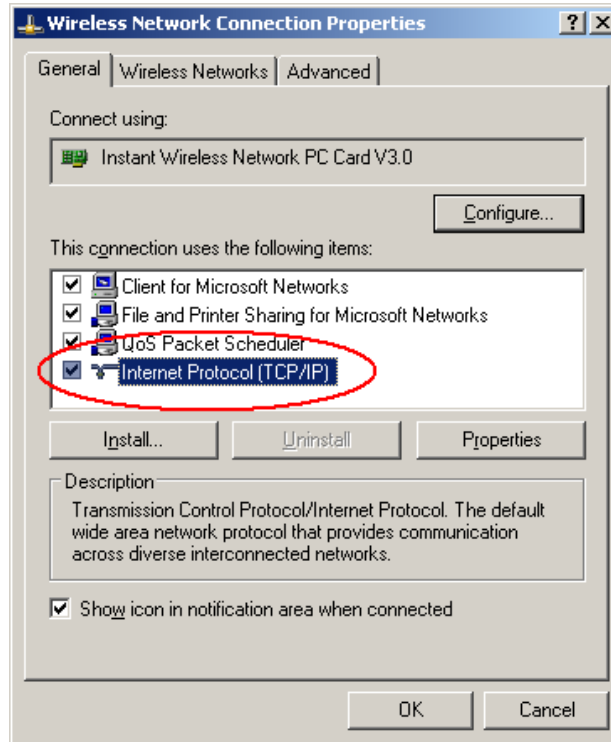
1. Go into the **CONTROL PANEL** from the **START MENU**. Look for the **NETWORK CONNECTIONS** icon and double-click it to open it.



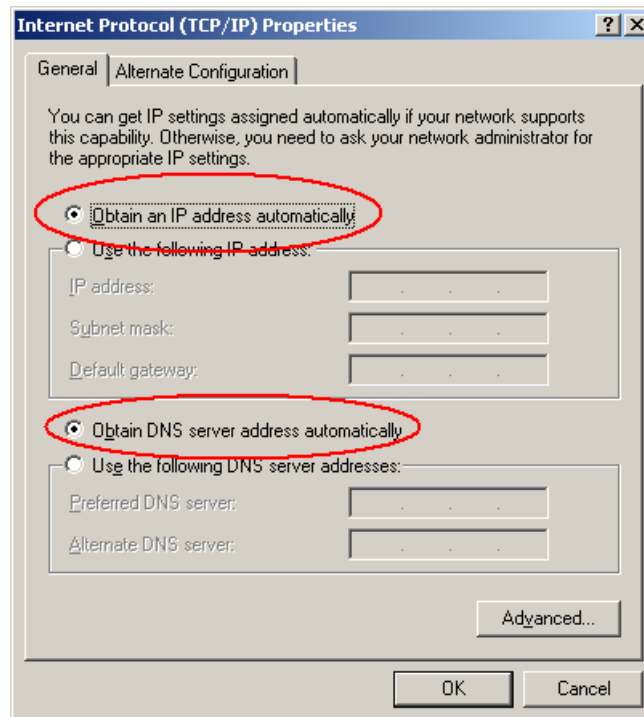
2. Locate the **DEVICE** you want to use to connect and single right-click on it. Select **PROPERTIES** with the left mouse button on the popup context menu. *(In the diagram below, "Instant Wireless Network PC" is the wireless card and "Realtek RTL8139/8" is Ethernet adapter. These are specific to this particular laptop...Your laptop may or may not have the same name brand devices installed.)*



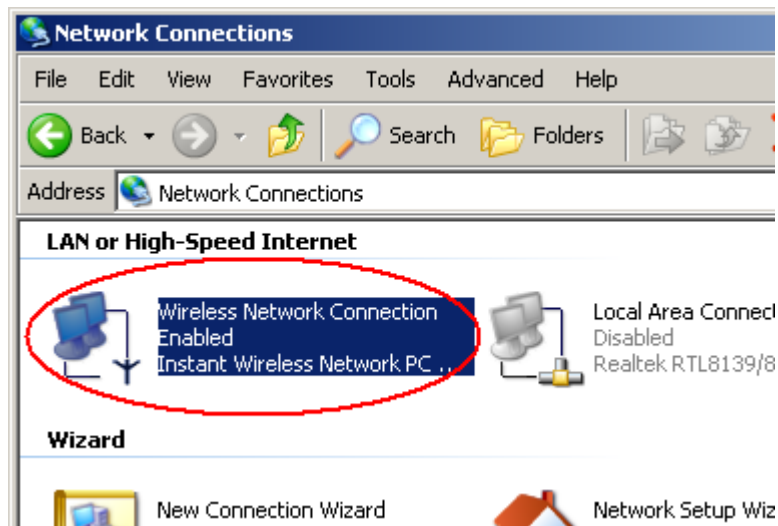
3. Double-click on **INTERNET PROTOCOL (TCP/IP)**.



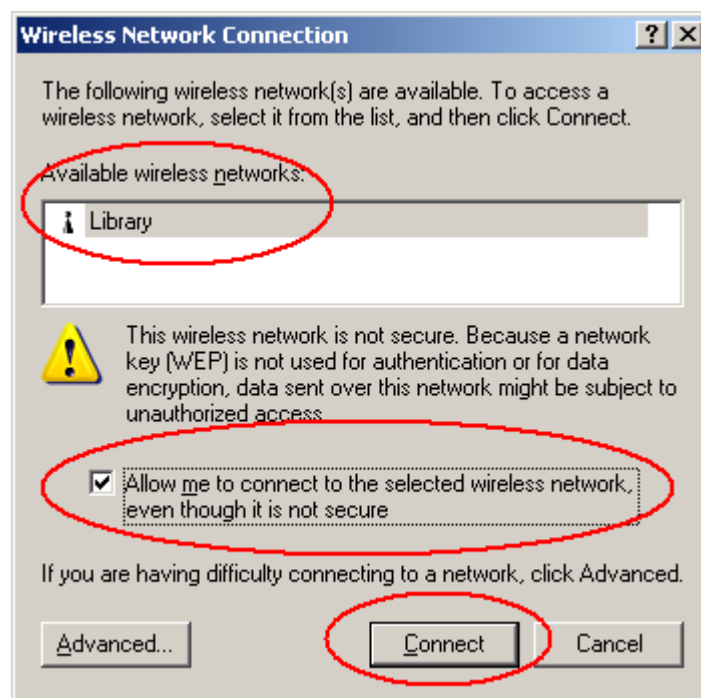
4. Make sure that **OBTAIN AN IP ADDRESS AUTOMATICALLY** and **OBTAIN DNS SERVER ADDRESS AUTOMATICALLY** are selected. Click **OK** to exit.



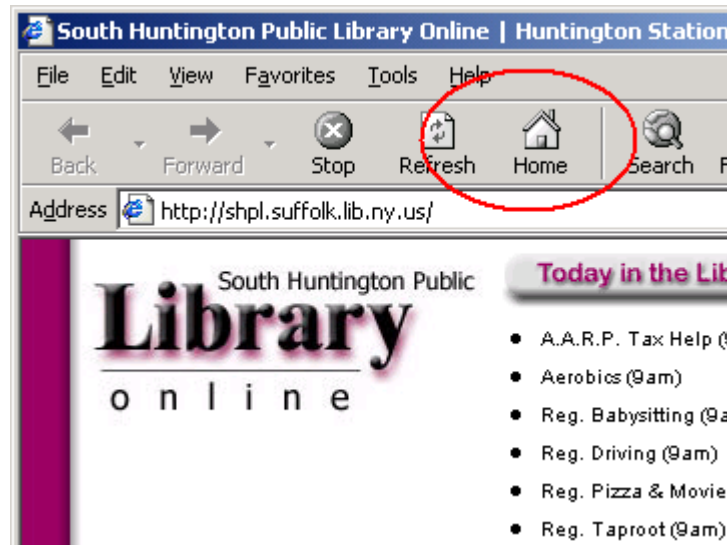
5. Single right-click on your **WIRELESS ADAPTER** and select **VIEW ALL AVAILABLE WIRELESS NETWORKS** with the left mouse button from the popup menu. (Skip step 5 if connecting to the wired public network.)



6. The name (or SSID) of the wireless network is **LIBRARY**. Select **LIBRARY** and check the box next to **ALLOW ME TO CONNECT TO THE SELECTED WIRELESS NETWORK, EVEN THOUGH IT IS NOT SECURE**. Click the **CONNECT** button. (Skip step 6 if connecting to the wired public network.)



7. Start **INTERNET EXPLORER** or the web browser of your choice. Click the **HOME** button. (If a webpage fails to display, click the **STOP** button and then **REFRESH**.)



8. The wireless **DISCLAIMER PAGE** should now appear. You must click **I AGREE** at the bottom of the page to use the public network. (The Disclaimer page is re-displayed every 12 hours.)

comes the availability of material that may be considered "inappropriate" for some users. Use of any information obtained is at your own risk and it is up to each user to determine what is appropriate.

#### **ACCEPTABLE USE POLICY**

1. Any use of this service for unlawful purposes is prohibited.
2. Copying commercial software is in violation of copyright law.
3. Using this service to harass other users or to interfere with their work is prohibited.
4. Any user's traffic that crosses another network may be subject to the network's acceptable use policy.
5. Deliberate attempts to degrade or disrupt system performance are prohibited.

**I AGREE**

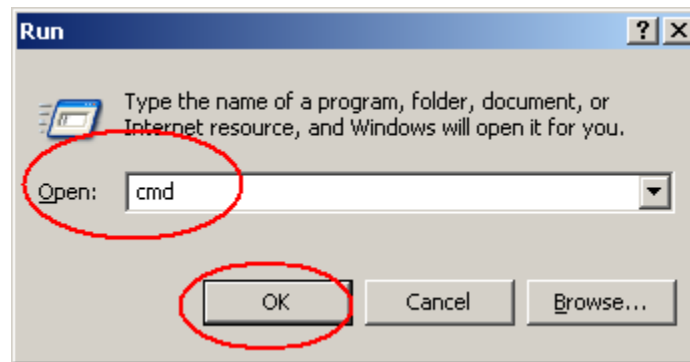
# TROUBLESHOOTING

First, double-check the following:

- Are other network connections on the laptop interfering with the Library's? Did you disable them?
- Is your wireless card working? If possible, did you try unplugging and re-inserting the card?
- Is the wireless signal too weak where you were sitting? Did you try moving to another spot in the room?
- Could there be a program or piece of software on your laptop that's preventing you from connecting? Firewall? Spyware? Virus?
- If connecting to the wired network, are both ends of your Ethernet cable inserted securely in to the jack?

Next, check to see if your laptop is actually receiving and address to join the wireless network...

1. Close all open windows. Click the **START BUTTON** and click **RUN**. Type **CMD** and click **OK**.



2. At the C:\ prompt, type **IPCONFIG** and press the **ENTER KEY**. Your computer should have an IP address in the **10.10.10.100 → 10.10.10.150** range. If it does not, type **IPCONFIG /RELEASE** at the prompt and press **ENTER**. Wait for your computer to release the address. Now type **IPCONFIG /RENEW** to force your computer to request a new IP address from the Library's wireless network. If the IP address displayed starts with 169.x.x.x or 192.168.x.x, double-check your settings and then **REBOOT** the computer.

```
C:\WINNT\system32\cmd.exe
C:\>ipconfig
Windows 2000 IP Configuration
Ethernet adapter Optimum Online Connection:
    Connection-specific DNS Suffix . :
    IP Address . . . . . : 10.10.10.100
    Subnet Mask . . . . . : 255.255.255.0
    Default Gateway . . . . . : 10.10.10.1
C:\>ipconfig /release
Windows 2000 IP Configuration
IP address successfully released for adapter "Optimum Online Connection"
C:\>ipconfig /renew
Windows 2000 IP Configuration
Ethernet adapter Optimum Online Connection:
    Connection-specific DNS Suffix . :
    IP Address . . . . . : 10.10.10.100
    Subnet Mask . . . . . : 255.255.255.0
    Default Gateway . . . . . : 10.10.10.1
C:\>_
```

When Windows cannot receive, or does not receive an IP address from our server in time, it assigns itself a random address in the 169.x.x.x range. The 169.x.x.x is a private, non-routable range and your computer will not connect to anything other than itself at this time. This address remains “fixed” until the computer is powered off and on again – reboot.

IP addresses in the 192.168.x.x range are private, but are routable. Most home or small business networking devices use IP addresses in this range.

Case: A user purchases a “Linksys Wireless Router” at the local BestBuy to use at home with their Optimum Online cable modem. The Linksys router has the ability to assign IP addresses automatically by default, and most likely, your laptop still has a Linksys address assigned to it. Following the step above will make your laptop “release” its 192.168.x.x address, and “renew” its address with one from the Library’s range 10.10.10.100 –10.10.10.150.